

# Network Reliability

Giuseppe Cimò, JIVE  
Nov 12, 2007

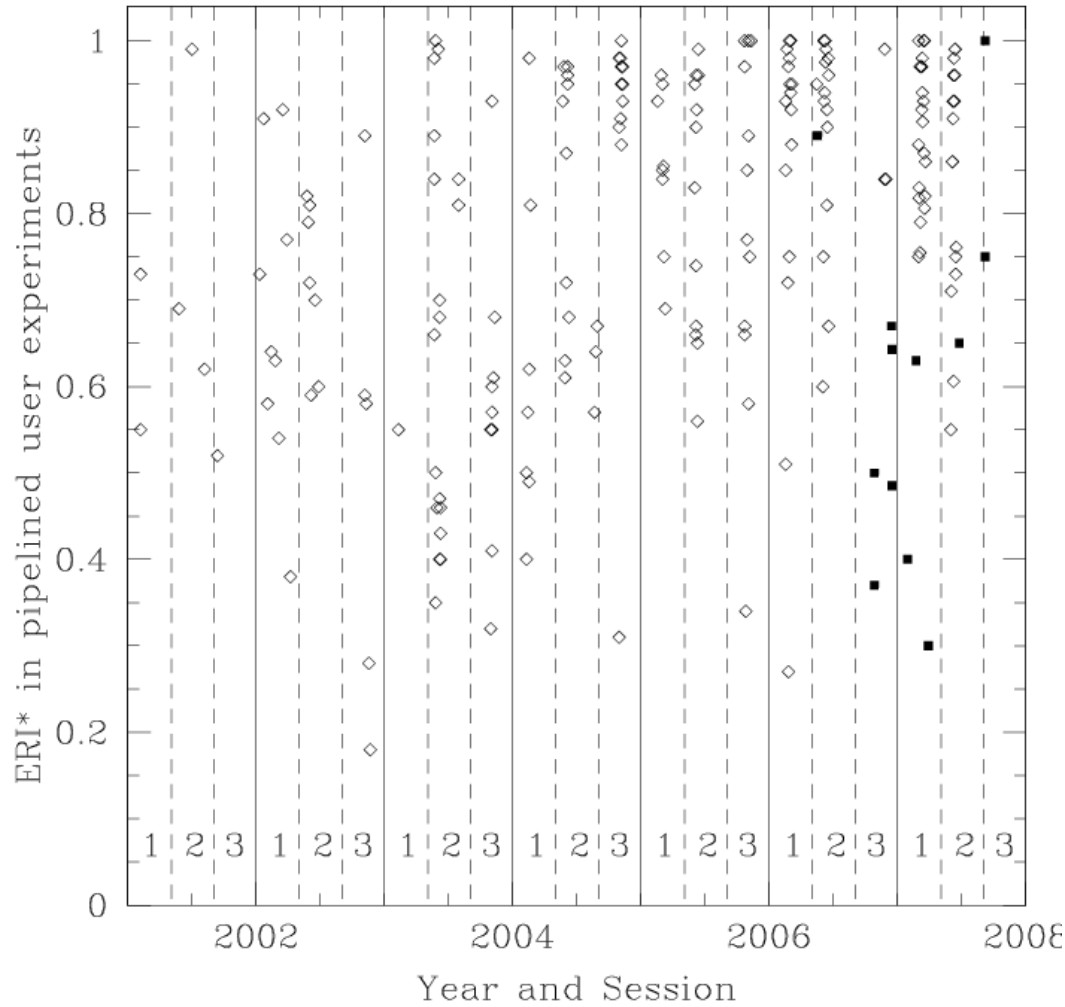


## Network Reliability

(Sessions: 3/2006, 1 and 2/2007)

- Several stations reported brief data losses due to problems with either Mk5 or FS control computers which required rebooting.
- Problems also reported about disks and Mark5 disk modules. In several occasions, the problems occurred when switching disks. One of the disks in the mark5 module was 'slow' in EG037A and EG037B (Gbps experiments). This corrupted all the data.
- *Many VCs at several stations did not work properly during some experiments (the problems occurred randomly, though the ftp tests spotted some bad VCs and the NME reports give now information about the VC statistics.)*
- In session 2/2007, the JIVE Software correlator has been successfully used in parallel with the NICT software correlator.
- In session 3/2007, all the ftp tests have been done using the JIVE software correlator. A new and informative web page is available shortly after each ftp test.
- Some *non-specified* 'operator error' reported at a number of stations.
- FTP tests spotted a number of (quickly fixed) problems: i.e. swapped pols, bad VCs and a 1.5 minutes offset of telescope computer time in Tr.

# ERI\* vs. Time



Median ERI\* for 2007 = 0.86  
 session 1/2007 = 0.87  
 session 2/2007 = 0.81

